

Compressed Air Separators

Southwest Thermal Technology

Questions? Call Sales M-F 8am-5pm PT
p. 888-226-8522 | www.SouthwestThermal.com



S-50 and S-100 Models

Two Models:

One with a built-in automatic float style drain, the second with a 1/8" NPT connection with manual shut off valve. Rugged cast zinc housing. Equipped with quick disconnect bowls for easy service.



S-200 thru S-1700 Models

Four models to fit most applications. Unique high efficiency design provides wide SCFM capacity range without loss in performance. Sturdy, lightweight aluminum construction for long dependable service. NPT threaded drain connection for installation of an electronic, manual or automatic float style drain. Low differential pressure at maximum flow ratings. Externally and internally epoxy painted for maximum corrosion protection.



Model S-2600-M/S-2600-4F

1500 thru 3500 SCFM capacity. Consult factory for details on larger models thru 16,000 SCFM. (S-2600-4F shown above.)

MAINTENANCE

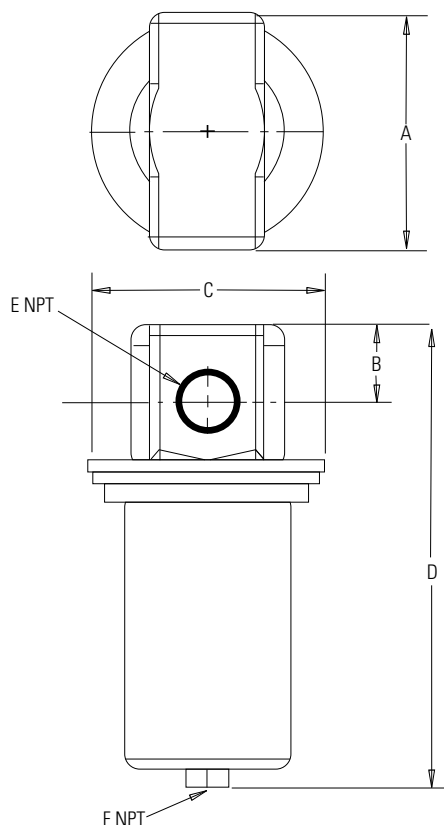
1. Depressurize unit before removing bowl.
2. A. If unit is equipped with a manual petcock, drain bowl at least once per workshift. More frequent draining may be required
B. If unit is equipped with an automatic float drain attached to the bowl, clean by turning bowl upside down, tapping on table top, and blow clean with airblow gun.
3. If bowl seal is cracked, damaged, or deteriorated, replace with approved seal.

Compressed Air Separators

Southwest Thermal Technology

Questions? Call Sales M-F 8am-5pm PT
p. 888-226-8522 | www.SouthwestThermal.com

Dimensions



MODEL NUMBER	A	B	C	D	E (NPT)	F (NPT)	WEIGHT LBS.
S-50 M	3.25	0.98	3.25	7.20	1/2"	1/8"	2.9
S-50 AD	3.25	0.98	3.25	7.35	1/2"	1/8"	3.1
S-100 M	4.62	1.00	4.75	10.00	1"	1/8"	6.0
S-100 AD	4.62	1.00	4.75	10.00	1"	1/8"	6.0
S-200 M	5.10	1.60	4.38	10.80	1"	1/2"	4.8
S-300 M	6.70	2.00	4.38	17.00	1-1/2"	1/2"	11.2
S-600 M	6.70	2.00	6.00	17.00	2"	1/2"	11.2
S-1700 M	8.10	2.40	7.75	19.90	3"	1/2"	22.00
S-2600 M	13.75	7.25	8.62	30.50	4"	3/4"	85
S-2600 4F	13.75	7.25	8.62	30.50	4" Flg	3/4"	100

*Supplied with manual shut off valve.

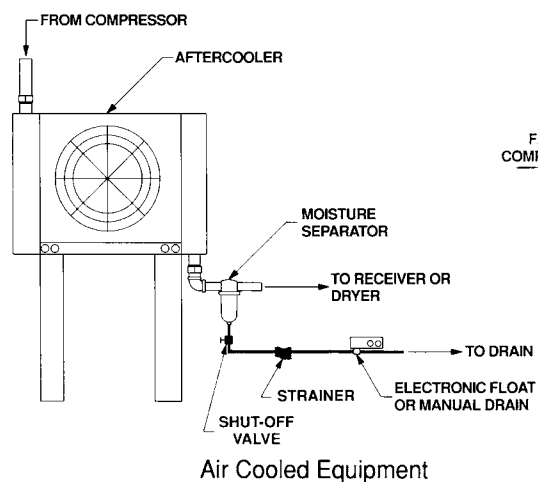
Specifications

MODEL NUMBER	SCFM RANGE C100 PSIG MIN. MAX		△P AT MAX SCFM	PSI MAX	TEMP °F MAX	BOWL TYPE	DRAIN TYPE
S-50 M	5	50	0.5	200	175	Cast Zinc	Manual
S-50 AD	5	50	0.5			Cast Zinc	Automatic with Internal Float
S-100 M	11	120	0.5			Cast Zinc	Manual
S-100 AD	11	120	0.5			Cast Zinc	Automatic with Internal Float
S-200 M	11	233	0.7	232	176	Aluminum	Manual
S-300 M	60	472	1.0			Aluminum	Manual
S-600 M	100	742	1.3			Aluminum	Manual
S-1700 M	260	1700	1.0			Aluminum	Manual
S-2600 M	1500	3500	1.5			Carbon Steel	Manual
S-2600 4F				150	Carbon Steel	Manual	

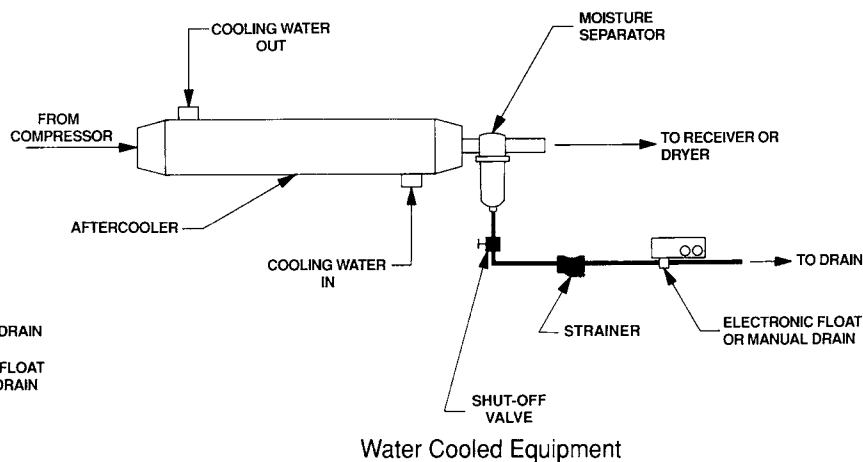
MINIMUM OPERATING TEMPERATURE - 35°F

Specifications and dimensions subject to change without notice.

Recommended Typical Installation



Air Cooled Equipment



Water Cooled Equipment